



# FLEXIGLASS BUILD MANUAL - SECTION 1-3C

## FORD RANGER PX CANOPY BUILD DIFFERENCES - ISSA1

**Note:** Familiarise yourself with the instructions before you start to ensure you are clear on all aspects of the fit

### SAFETY EQUIPMENT

- Hearing protection as required
- Eye protection as required

### TOOLS REQUIRED

- 13mm spanner.
- 8mm socket.

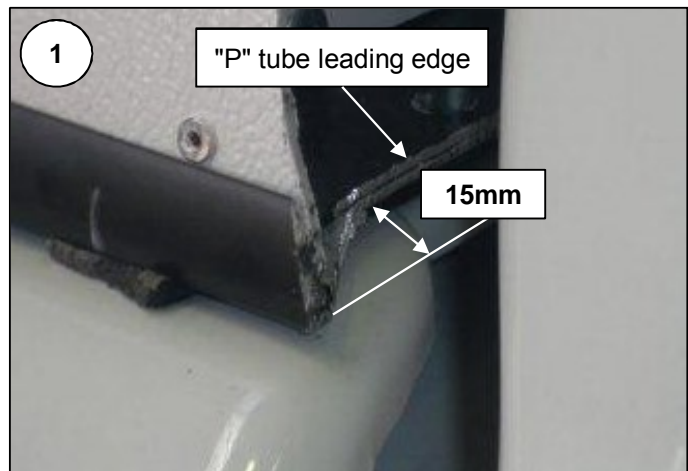
### MATERIALS & PARTS REQUIRED

Part No.	Description	Qty.
WSH140	Swing handle washer	2
	Loctite 243	As req'
	Window Rectification Latch	2
	Window Rectification Latch, grub screw	2

**NOTE:** These instructions are to be read in addition to and in conjunction with Canopy build instruction **1-1E-Standard Adhesive Base Rail Build ISSA8.**

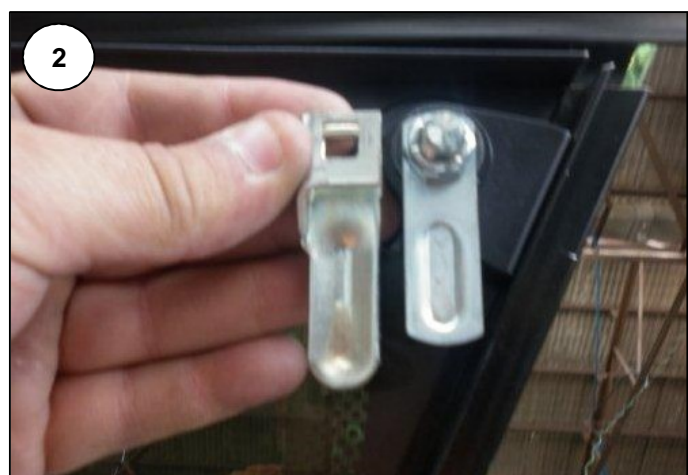
- 1 The front corners of the PX Ranger canopy need to be finished with the base rails 15mm in front of the leading edge of the "P" tube as shown in **ILL 1.**

There are no other differences to the build except for the following alterations to the latches on the frameless **DR5519FL** door.

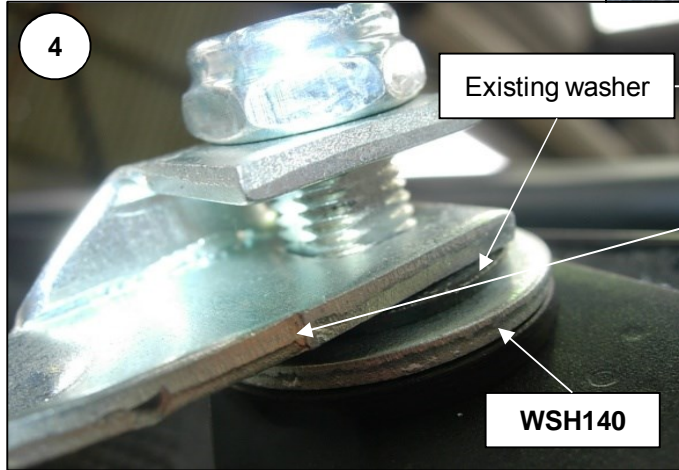
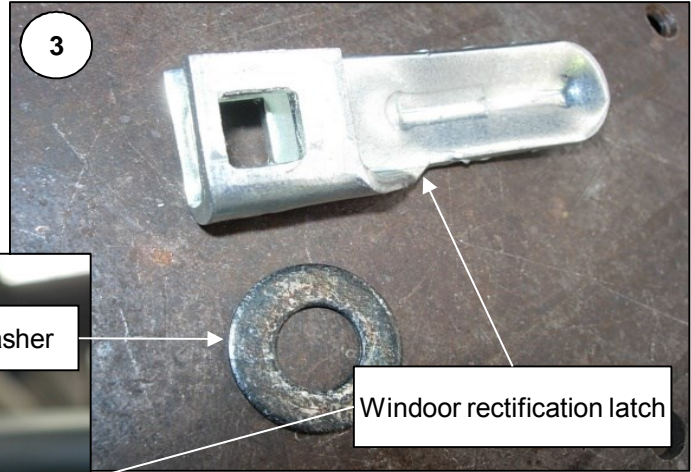


- 2 The latch bar supplied gives problems due to the curvature of the tailgate. The door itself is not all that hard to bend once the canopy is on the vehicle but the square cut edges of the latch bar cause it to jam under pressure.

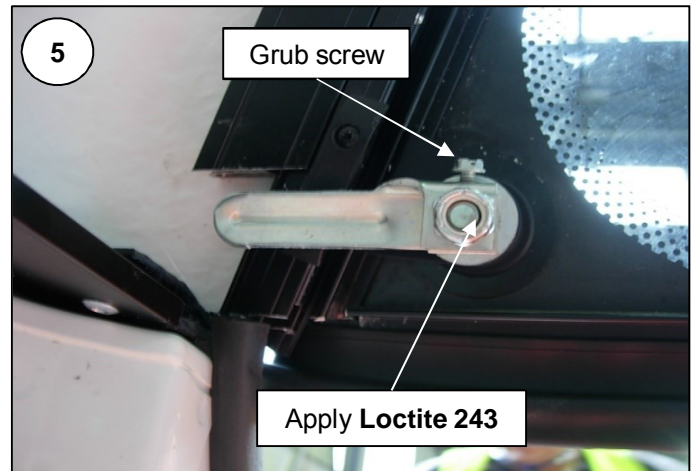
The best method was found to be to replace the existing bar with the "Window Rectification Latch" that all branches should have a supply of.



- 3 Once the lock nuts have been removed there will be found a grey coloured washer underneath the latch bar.
- 4 A further **WSH140** swing handle washer will be required for each handle to be inserted as shown in **ILL 4**.



- 5 Due to the increased thickness of the latch bar, **Loctite 243** must be applied to the thread of the nut when it is fitted and tightened. This will help stop the nut unscrewing because the nylon insert no longer contacts the stem thread.
- 6 Once the nut is tightened to provide the required pressure for smooth rattle free operation of the handle, tighten the small grub screw to ensure the latch bar cannot work loose.



- 7 Due to the revised fitment procedure of the Canopy being secured through the BKT780LR please ensure that if Flexiracks are being fitted that enough room is allowed at the front of the baserail- suggest the width of 1 block

