



FLEXIGLASS FITTING MANUAL - SECTION 1-3I

APPLICABLE TO ALL CANOPIES

2015 PX RANGER XL HMSL COVER INSTRUCTIONS - ISSA0

Note: Familiarise yourself with the instructions before you start to ensure you are clear on all aspects of the fit

SAFETY EQUIPMENT

TOOLS REQUIRED

- Flat screwdriver
- Torx wrench

MATERIALS & PARTS REQUIRED

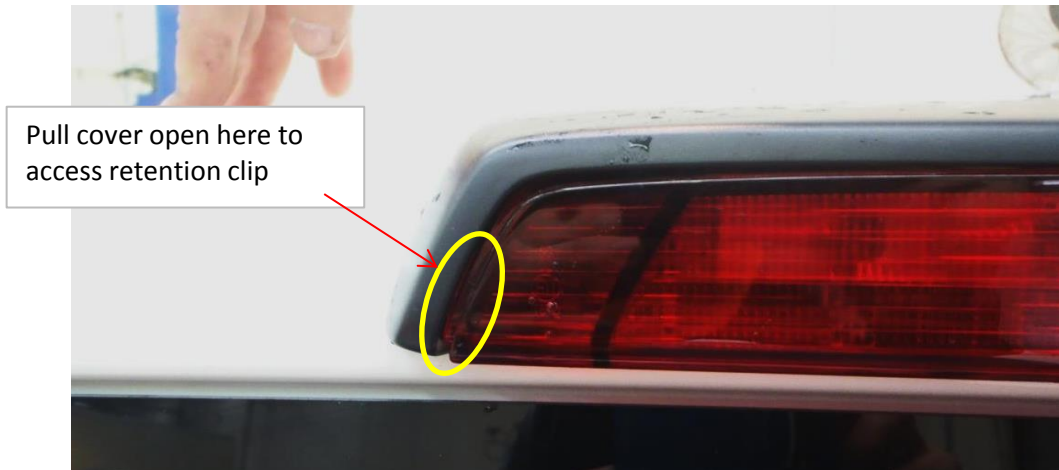
Part No.	Description	Qty.
COV240	PX Ranger 2015 XL HMSL Cov plt	1
	Silicon sealant	
	Electrical tape	

This cover plate is only applicable to **2015 PX Ranger XL** models with large cabin mounted High Mount Stop Light - which it replaces in order to allow fitment of a canopy



- 1 Remove the Black plastic surround of the high mount stop light by gently pulling open the side of the cover and using a flat blade screwdriver to release the plastic clip inside.

Slide the cover rearwards to remove



- 2 Use torx wrench to remove the high mount stop light mounting screws



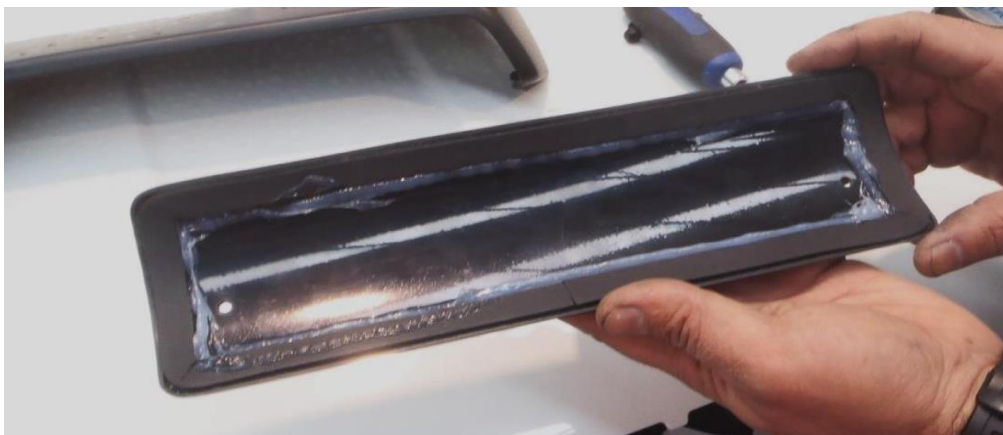
- 3 Pull out the stop light and unplug from the wiring loom



- 4 Wrap the plastic connector in electrical tape and secure inside the stop light cavity to ensure it doesn't rattle against the sheet metal



- 5 Thoroughly clean the surface around the stop light cavity before attaching the cover plate
- 6 Run silicon sealant around the inner edge of the foam seal on the cover plate. This allows the foam to seal naturally against the cabin and provides a second seal against water leaks.



- 7 Re-use the mounting screws from the stop light to attach the new cover plate. Use them as a guide to line up the cover before sealing against the cabin. Torque by hand until firm but do not over-tighten

