



FLEXIGLASS FITTING MANUAL - SECTION 1.5B

MITSUBISHI TRITON ML FLEXISPORT & WORKSMART CANOPY FIT - ISSA2

Note: Familiarise yourself with the instructions before you start to ensure you are clear on all aspects of the fit

SAFETY EQUIPMENT
● Hearing protection as required
● Eye protection as required

TOOLS REQUIRED
● Plywood or cardboard sheet
● Pneumatic or hand hacksaw
● Grinder, sander or file
● Metal priming paint
● Paint brush
● Silicone sealant & applicator
● Pneumatic or electric drill
● 5mm Drill bit
● Rivet gun with 5mm capacity
● 6mm Allen key
● Pneumatic or hand driver
● 14mm Socket
● Cable cutter, stripper, crimp tool
● Lock tight
● Knife or scissors
● Snake for guiding cables
● IPA Wipes or similar cleaning product
● Toledo cable strippers
● Würth Cable strippers

MATERIALS & PARTS REQUIRED		(FIT KIT 215)
Part No.	Description	Qty.
GRO10	Grommet Champ 3/16x5/16x7/16	1
TAPE180	Tape 4203 Front Tube 25X3 25M	
CON130	Connector Wire 3-4mm WH Narva	1

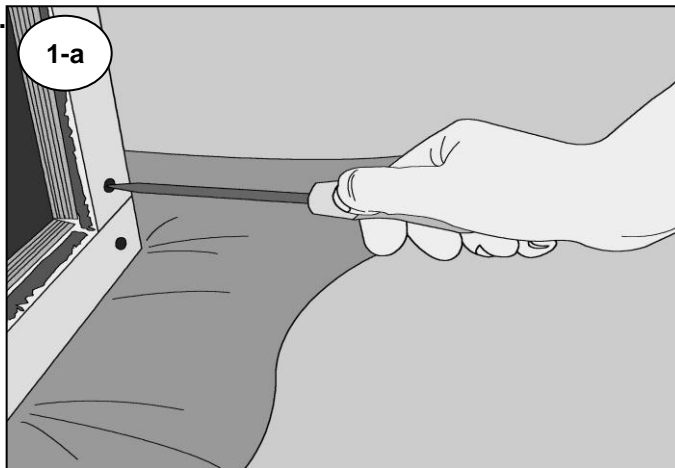
LIST OF ML TRITON FLEXISPORT CANOPY COLOURS AVAILABLE

CANFSMIDAR	Canopy FS Trit ML DC Red Pla	RED PLANET P19
CANFSMIDB	Canopy FS Trit ML DC Black	Colour Code X08
CANFSMIDCB	Canopy FS Trit ML DC CyberBlue	CYBER BLUE T69
CANFSMIDGM	Canopy FS Trit ML DC Gum Met	GUN METAL A72
CANFSMIDMB	Canopy FS Trit ML DC Blue	MIDNIGHT BLUE
CANFSMIDPG	Canopy FS Trit ML DC GreenPlat	PLATOON GREEN GR
CANFSMIDPW	Canopy FS Trit ML DC White	POLAR WHITE W32
CANFSMIDSS	Canopy FS Trit ML DC Silver	STARLIGHT SILVER A66
CANFSMIDTG	Canopy FS Trit ML DC Grey	TITANIUM GREY A67
CANFSMITPR	Canopy FS Trit ML Primed	

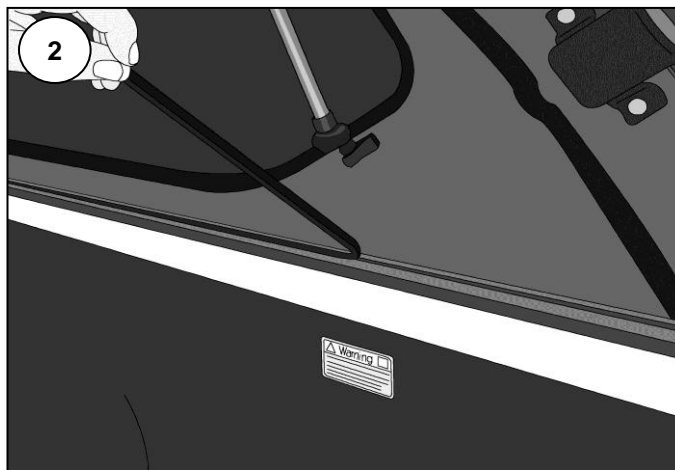
Note: If vehicle has no cab rack fitted, proceed to Step 4

- 1 Place a piece of thin plywood or heavy duty cardboard sheet between the cab and the tub to protect paint and glass whilst cutting the cab rack off.
- 2 Sand cut areas of front panel flat and paint bare metal with metal priming paint.

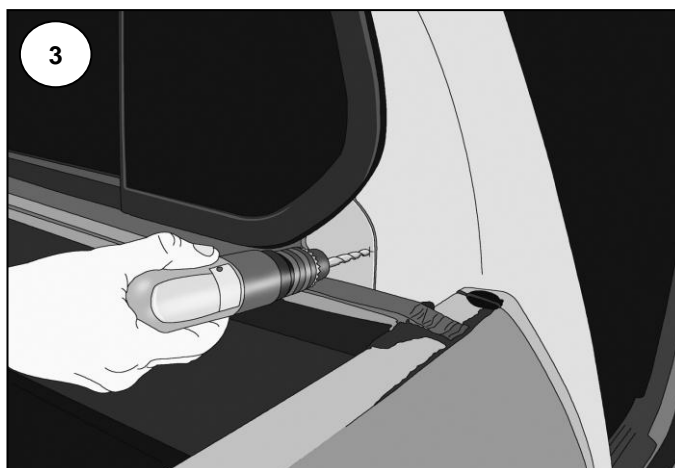
- 3** Remove protective sheet from the vehicle **ILL1-a**. Any forgotten screw leads to damage on the vehicle. Make sure that all screws are removed. **ILL 1-b**.



- 4** Place canopy on it's front end on a soft surface and remove the base rail protector strips. See **ILL 2**.

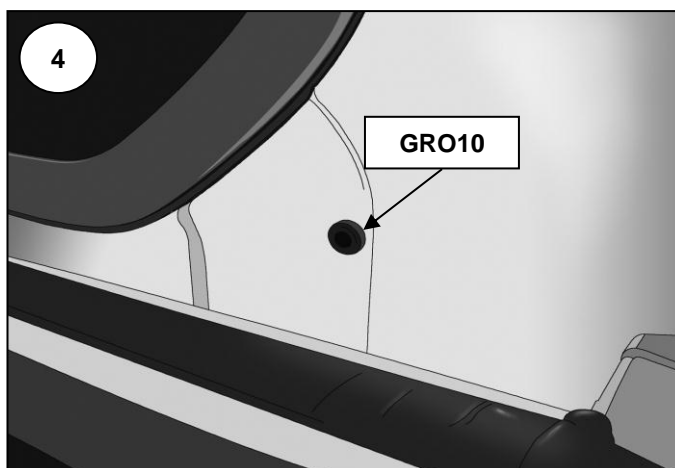


- 6** Drill a 5/16 hole in the back of the cab drivers side, below rear window just above the height of the tube and 5mm to the left of vehicles body seam. See **ILL 3**. Then place a Grommet **GRO10** into the hole. See **ILL 4**.



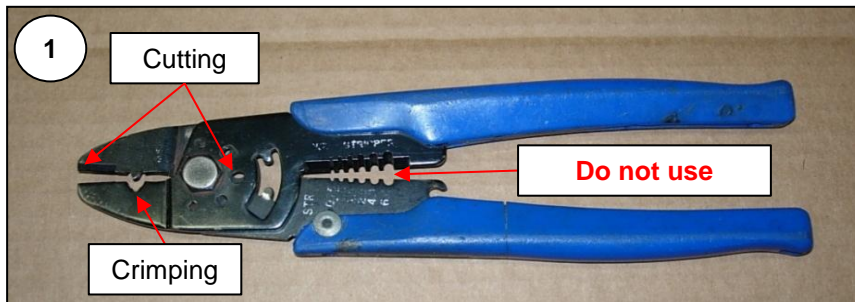
- 7** Apply a strip of truck tape **TAPE180** across the top of the tub front panel.

- 8** Lift prepared canopy onto tub and position just back from front on tub.



ELECTRICAL WIRE STRIPPING SAFETY PROCEDURE

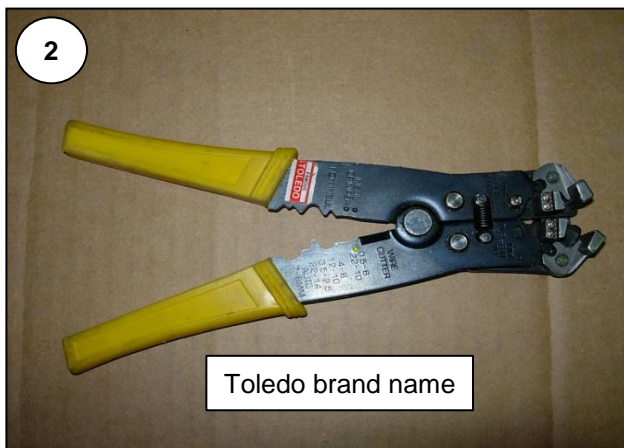
It is Flexiglass policy that the use of combination electrical cutting/crimping and stripping pliers be restricted to cutting and crimping use only.



It is a documented fact that the use of these pliers can cause personal injury due to the fact that they are reliant upon holding the cable in one hand while pulling with the pliers with the opposite hand. Any attachments to the gripped end can be pulled into and through the palm of the gripping hand causing injury.

The single hand action strippers are to be used at all times for stripping cable ends ready for joining or connecting.

Two types of cable strippers are recommended, one operates with the pliers at 90° to the cable (2) the other operates in-line with the cable (3).



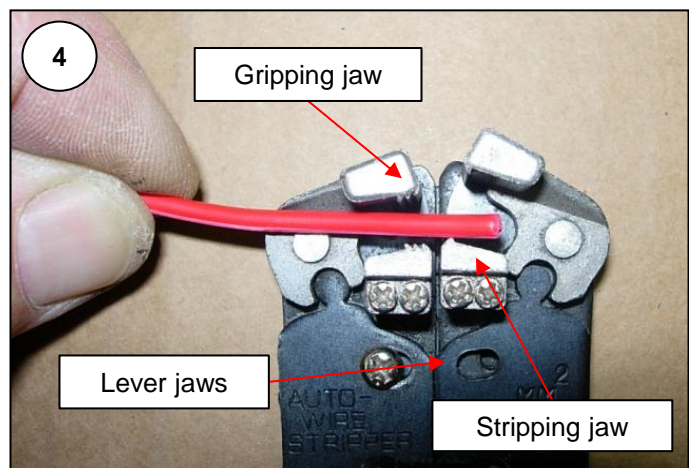
The tool in ILL 2 is a generally stronger and harder wearing item but the other is very useful for getting to cables in restricted space, it is therefore recommended that both types be available.

OPERATING INSTRUCTIONS

- 1 Squeeze handles sufficiently to bring the lever jaws together. Lay cable between stripping jaws as shown in ILL 4.

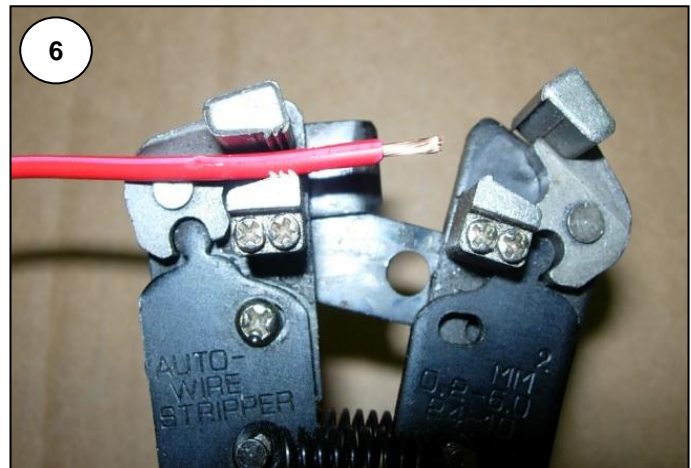
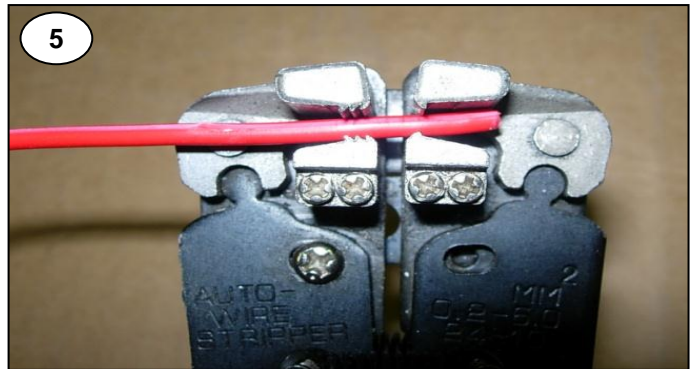
Note:

There should be no necessity to strip more than 10mm of sheathing from the cable end for any of the connectors used by Flexiglass. If for any reason a longer stripped end is required, do it in repeated 10mm bites, the pieces can then be slid off the end using the fingers.

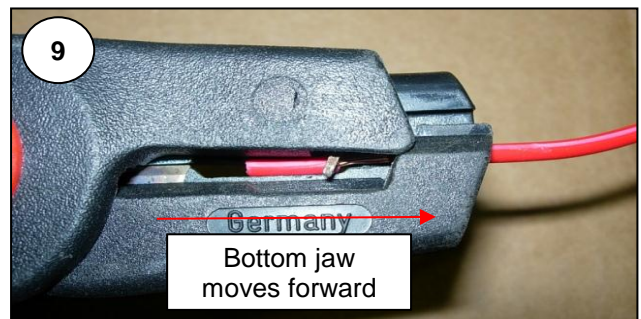


- 2 Continue squeezing the handles together to engage the gripping and stripping jaws.

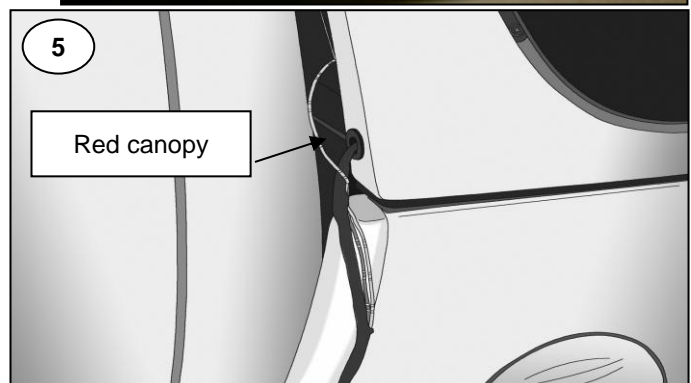
- 3 Increase the pressure slightly as you continue to squeeze. The stripping jaws will then move independantly of the pliers cutting and stripping the end of the wire until with a sharp click both sets of jaws will automatically disengage.

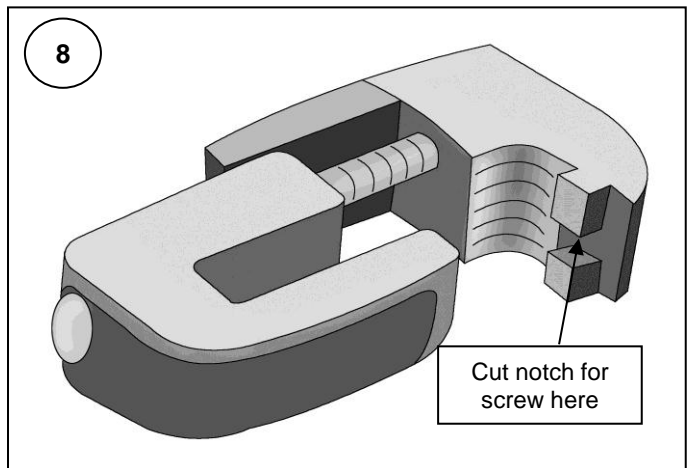
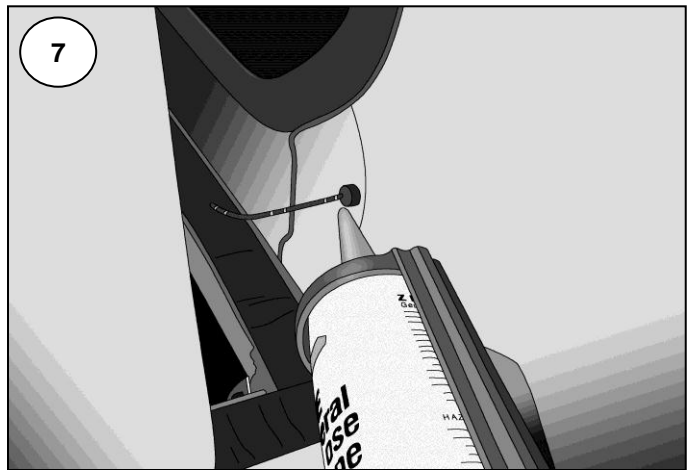
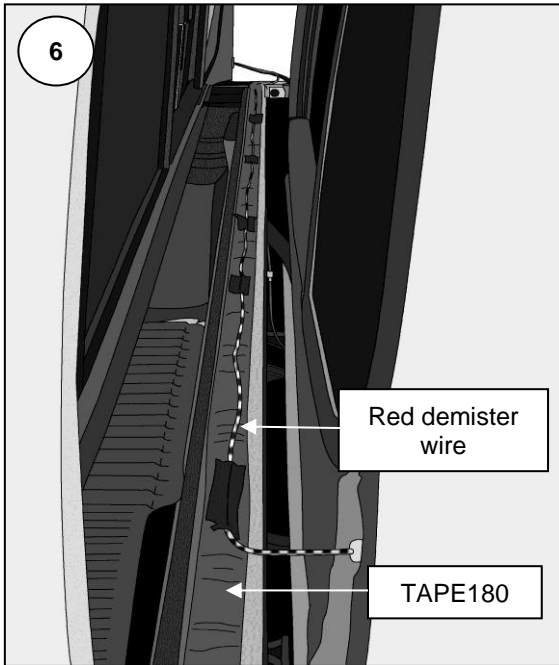


- 4 The Wurth pliers are simpler in operation. After placing the cable in the "V" of the bottom ILL 7, squeeze the handles together. The squeezing action brings the jaws together and forces the bottom jaw forward both cutting and pulling the sheath from the cable. See ILL 8 & 9.
- 9 Slit the wiring conduit just in front of the canopy and pull the red wire through. See ILL 5.
Note: If the conduit is pulled taught at the other end it makes it easier to remove red wire.



- 10 Take the red demister wire and run along top of the truck tape TAPE180 and push red wire through grommet GRO10 Fix in position using some electricians tape. See ILL 6.
- 11 Silicon around wire and grommet and position canopy forward for best fit on tub. See ILL 7.





12 Remove the plastic trim from each canopy base side rail and retain for future use. See **step 17** and **ILL 1**.

13 If an over lip liner is fitted holes will need to be cut in the liner to allow the fitment of the six clamps. If an underlip liner is fitted ascertain how stiff the plastic is. If it is too stiff to allow the clamp to be pushed up between it and the metal lip, proceed as follows.

14 Position the clamps so as to miss any ribs on the liner and if possible missing the canopy alloy rail securing screws. The front and rear clamps should be approximately 150mm from their respective rail ends.

Note: If the securing screws cannot be avoided cut a notch in the clamp locating ridge of the top jaw of the clamp to bridge them. See **ILL 8**.

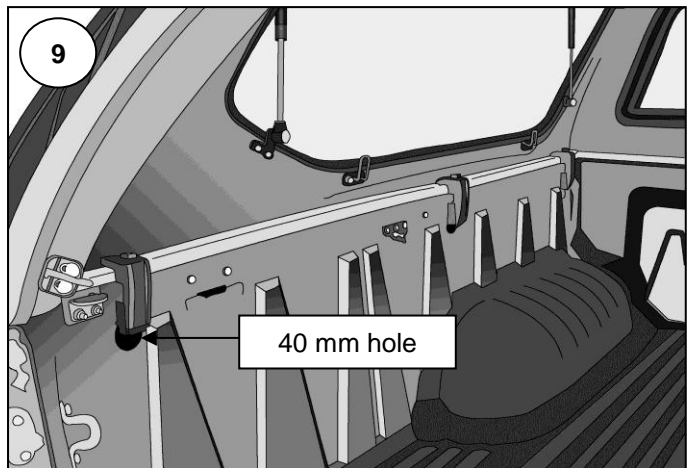
15 Use a 40mm hole saw to cut a hole in the liner so that the top is level with the bottom edge of the coaming lip. Repeat for all six holes.

16 Fit a clamp at each hole position. See **ILL 9**.

17 Use a 17mm spanner or socket to pull down each clamp.

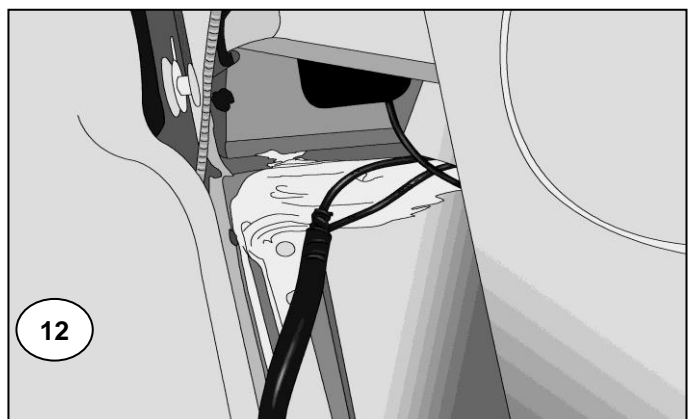
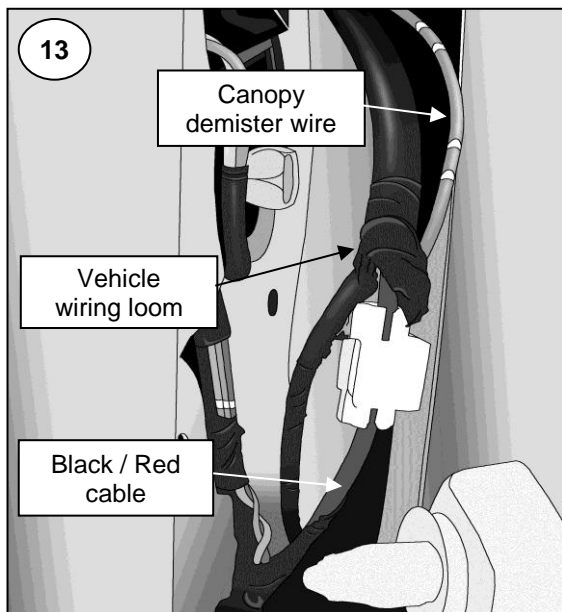
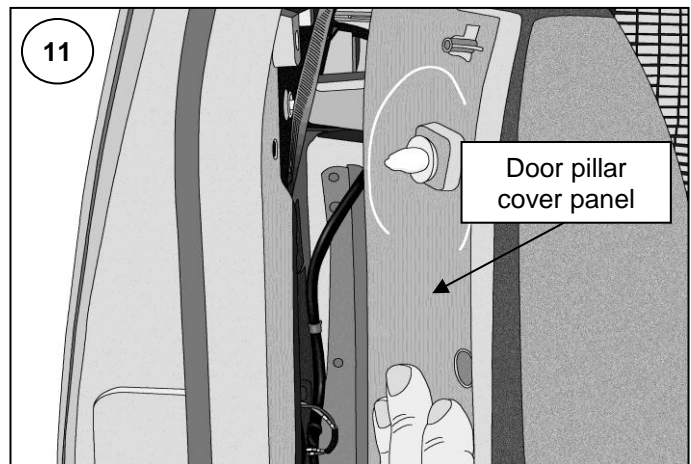
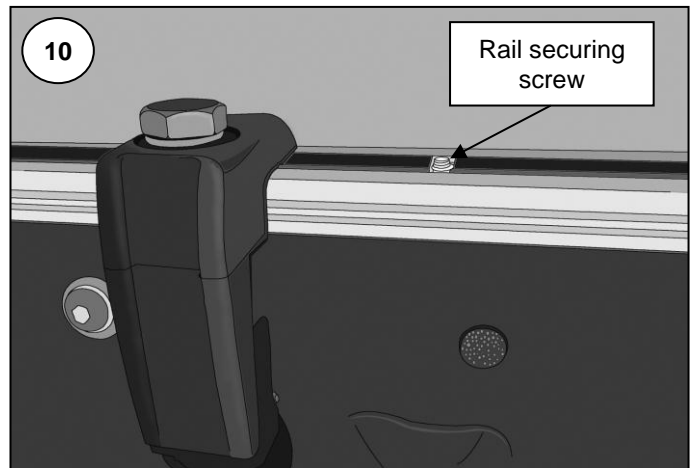
Note: Be careful not to over tighten the bolts as the captive nut can be pulled from it's housing if tightened over much.

18 Carefully replace the plastic trim to the bottom rail channel. Cutting it either side of each clamp and each rail screw. See **ILL 10**.



REAR DEMISTER

- 19 Unclip and fold back the vehicles plastic cowling below the rear window on the driver side. See **ILL 11**.
- 20 Find the Multi-fiber Red Wire and the vehicles Black / Red rear demister wire. See **ILL 11 & 12**.
- 21 Using a Quick connector **CON130** join the vehicles Black / Red rear demister wire to the Multifibre red demister wire. See **ILL 13**.
- 22 Replace the vehicles plastic cowling and job finished.



- 23 The canopy harness relay is not a waterproof relay. We recommend to keep the relay behind the the kick panel **ILL 13**. Never place the relay out of the car **ILL 14**.

