



# FLEXIGLASS BUILD MANUAL - SECTION 1-0J

## WORKEZY DOOR LOCKS - ISSB0

**Note:** Familiarise yourself with the following info before you start to ensure you are clear on all aspects of this procedure

### SAFETY EQUIPMENT

- Hearing protection as required
- Eye protection as required

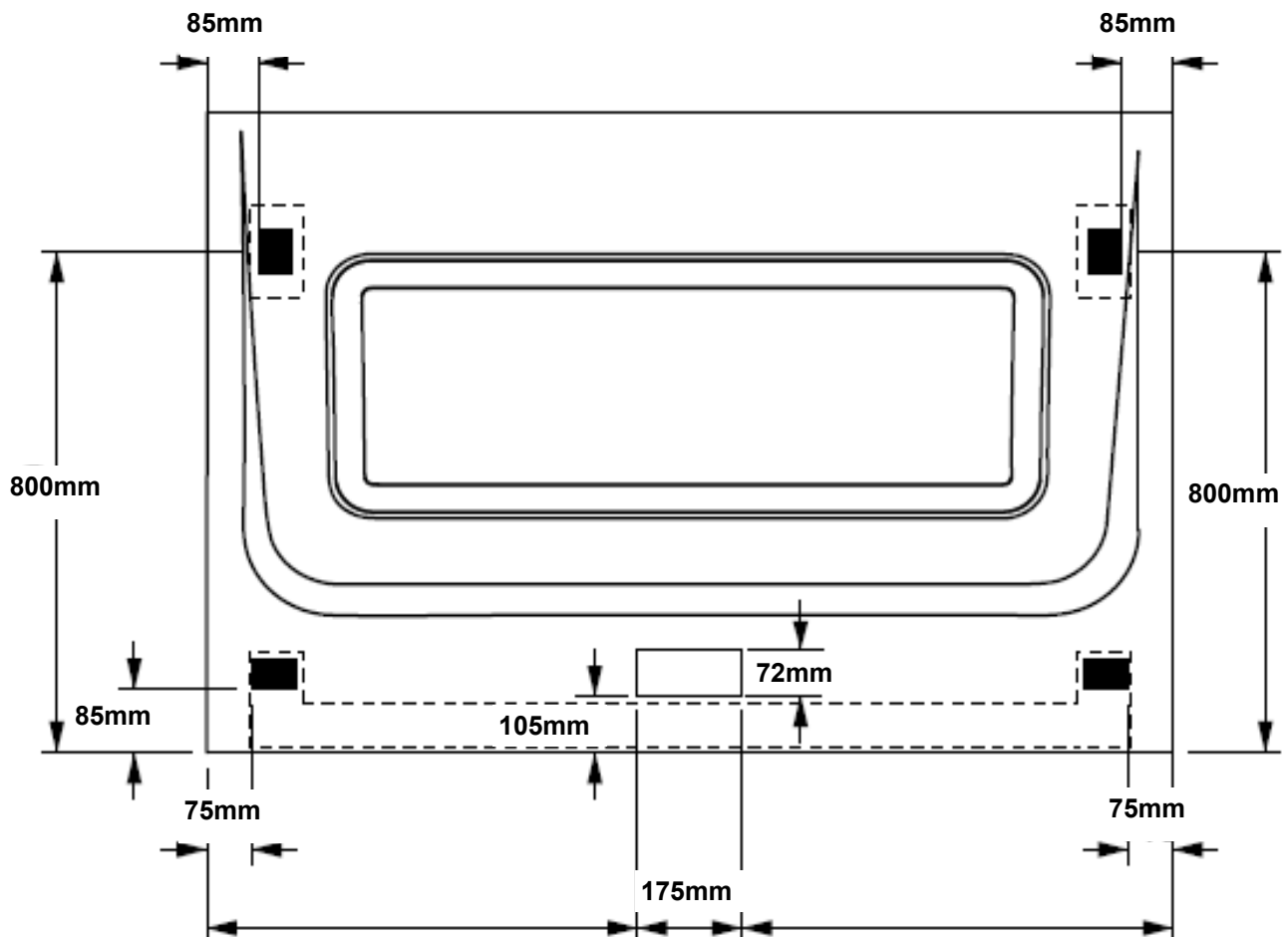
### TOOLS REQUIRED

- Air drill 10mm capacity
- Drill bits 5mm and 8mm diameter
- Pop rivet gun 5mm capacity
- 10, 12 and 14mm combination spanners
- Air ratchet
- 10, 12 and 14mm sockets to suit ratchet
- Air angle grinder with diamond cutting blade
- Philips head screwdriver 2 point
- Hexagon wrenches 2.5 and 3mm
- Hacksaw
- 28mm combination spanner or 250mm shifter

### MATERIALS & PARTS REQUIRED

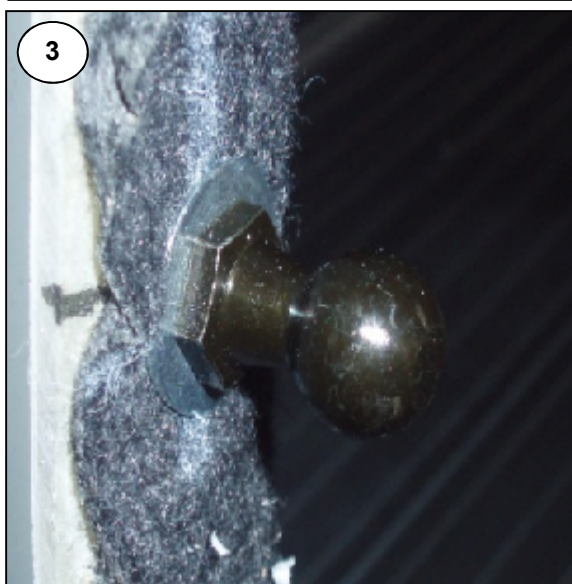
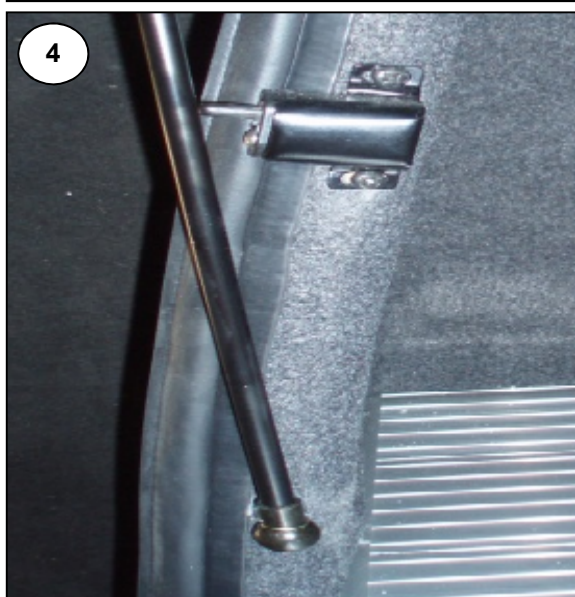
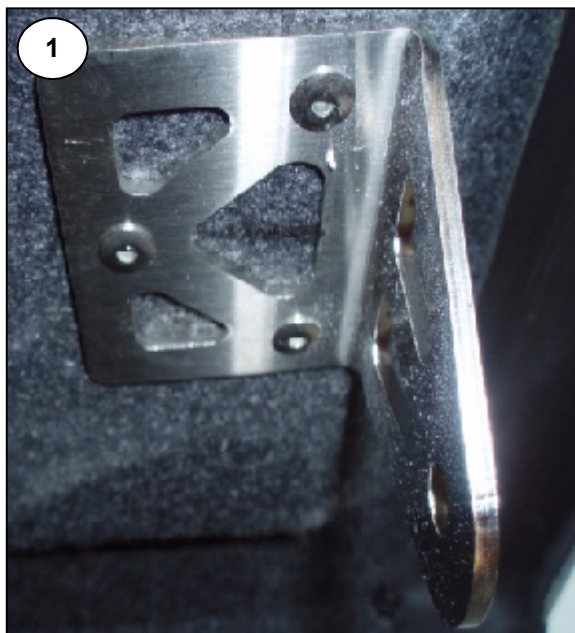
Part No.	Description	Qty.
KITC30	Kit comp workezy door hardware	1

Below are the measurements you will need to mark out each door on both DC + SC *WorkEzy's*.  
This will include Side and rear doors.



- 1 With the doors held out and using the measurement above mark out and fit the Universal Balljoint Bracket **BKT200** using **RIVET260**. As shown in **Image 1**.
- 2 On the pillar of the canopy, measure down from the top 830mm and drill a 8mm hole and fit the ball joint supplied with the struts and a washer **WSH220** as shown in **Images 2 and 3**.

**Note:** On the pillars which have the interior light switch you will have to fit a spacer (**NUTSTUD**) before fitting the balljoint as shown in **Images 4, 5, and 6**.



**NUTSTUD**

3 Once all ball Joints have been attached fit all gas struts to the doors and pillars.

4 Mark out the door for the handle (**Image 7**) using the measurements provided in the drawing on **Page 1**. Then cut hole using a diamond saw.

**Note:** Refer to **Photo 8** for handle part identification.

5 Remove the large nut and washer from the handle boss, pass the boss of the handle with its gasket through the large round hole in the stainless steel dish.

6 Fit the small Philips head screw and washer through the hole at the opposite end to the boss and re-fit the boss washer & nut - Tighten fully.

7 Fit the tube lock into the handle and secure with the screw provided.

8 Repeat for the remaining two handles.

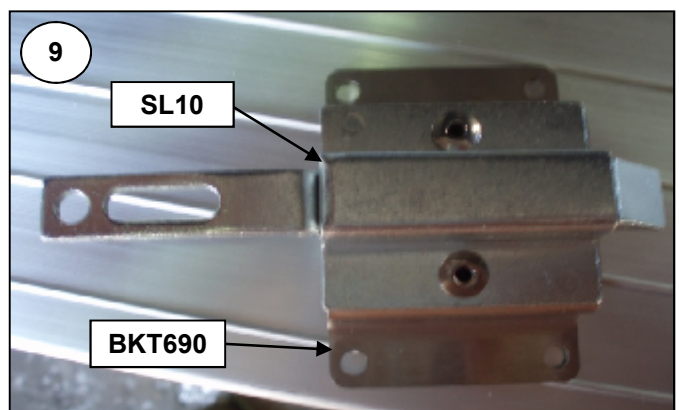
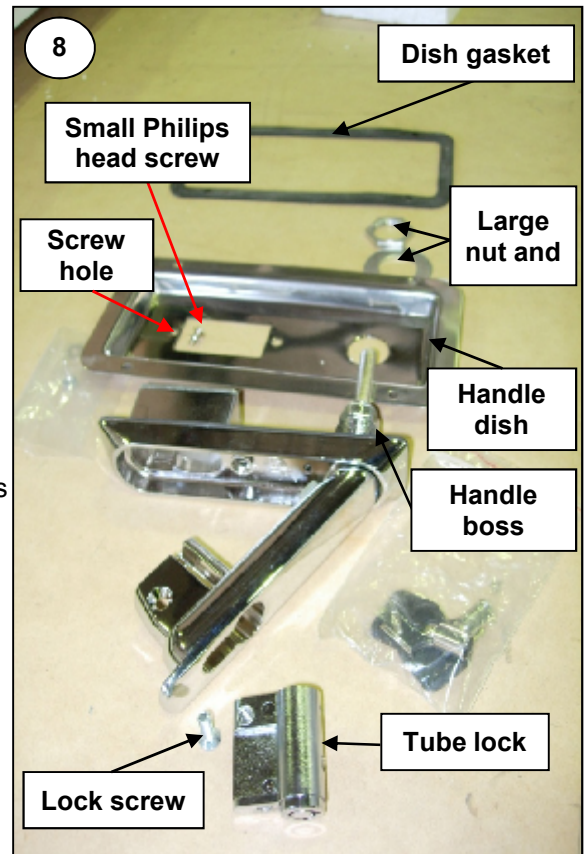
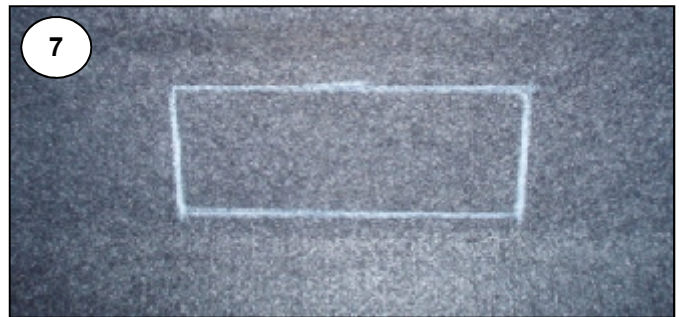
9 Fit the assembled handle and dish into the rectangular hole in the door and drill 5mm holes through the fibreglass using the dish as a template.

10 Apply a small bead of silicon around all the holes then stick the dish gasket to the door, pass the dish through both and secure with 4 of **RIVET260** & **WSH260**.  
**Note:** Assemble all handles with locks to the right.

11 Attach an **SL10** slam bolt to each of the **BKT690** mounting points with 2 **RIVET260** through the holes provided. **Photo 9**

12 Using Measurements in the drawing on page 1, mark where the slam lock is to be positioned.

13 Mount the Slam Lock brackets to the door with 4 **RIVET260** through holes provided



**14** Slide the **CAM120** over the square shaft of the lock with the grub screw boss away from the door. See **Photo 10**. Lightly tighten grub screw.

**15** Take the lock rods (**ROD10** - rear, **ROD20** - side) and with the flat end of the rod positioned correctly on the slam bolt slide, **Photo 11**, mark the position of the face of the camlock sleeve on the rod then add **15mm** to obtain the correct cut length. Cut them so that with the rod seated in the centre sleeve and the cam lock in the fully closed position, the sliding bolt is positioned as in **Photo 11**.

**16** Attach the flattened ends of the rods to the slotted holes of the slam locks using 1 **SCRHHSS620**, 1 **NUT6N** and 2 **WSH180**, and fit the round end of the rod into the cam lock sleeves and tighten grub screw as shown in **Photo 11** and **12**.

**Note:** Do not fully tighten the M6 screws. The rod must be free to slide on the slam bolt tongue.

