



FLEXIGLASS FITTING MANUAL - SECTION 1.1J

FIXING A DUST DEFLECTOR - ISSB3

Note: Familiarise yourself with the instructions before you start to ensure you are clear on all aspects of the fit

SAFETY EQUIPMENT

- Hearing protection as required
- Eye protection as required

TOOLS REQUIRED

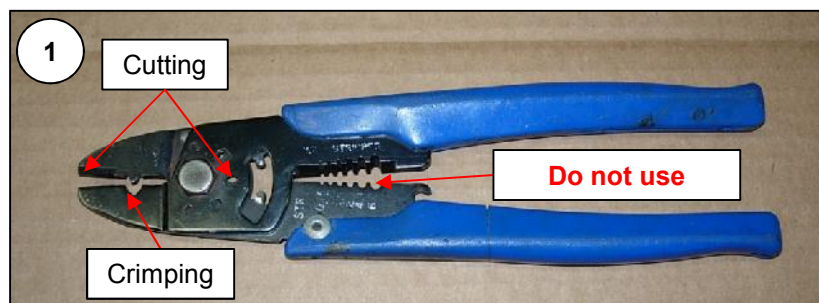
- Pneumatic drill
- 1/4" Drill bit
- 10mm AF Socket
- Ratchet wrench
- Silicone gun
- Toledo cable strippers
- Wurth Cable strippers

MATERIALS & PARTS REQUIRED

Part No.	Description	Qty.
BLTCHSS620	M6x20 ss cup head bolts.	2
WSH180	Washer 1/4 X 5/8 Flat	2
NUT8N	Nut Nyloc M8	2
SEAL430	Sikaflex 221 White 310G	1

ELECTRICAL WIRE STRIPPING SAFETY PROCEDURE

It is Flexiglass policy that the use of combination electrical cutting/crimping and stripping pliers be restricted to cutting and crimping use only.



It is a documented fact that the use of these pliers can cause personal injury due to the fact that they are reliant upon holding the cable in one hand while pulling with the pliers with the opposite hand. Any attachments to the gripped end can be pulled into and through the palm of the gripping hand causing injury.

The single hand action strippers are to be used at all times for stripping cable ends ready for joining or connecting.

Two types of cable strippers are recommended, one operates with the pliers at 90° to the cable (2) the other operates in-line with the cable (3).



The tool in **ILL 2** is a generally stronger and harder wearing item but the other is very useful for getting to cables in restricted space, it is therefore recommended that both types be available.

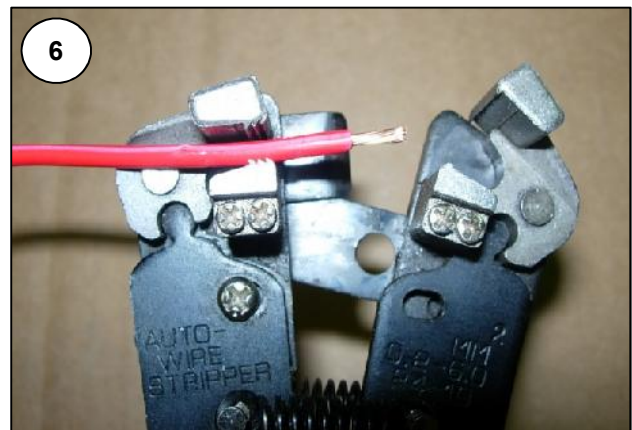
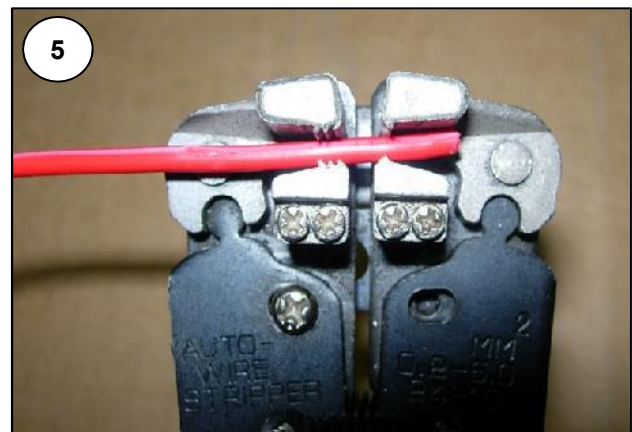
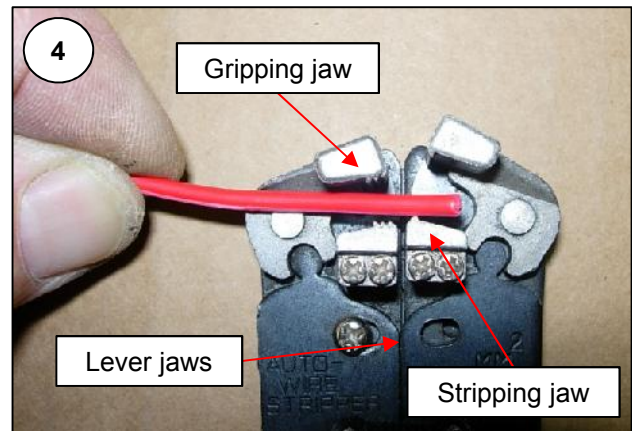
OPERATING INSTRUCTIONS

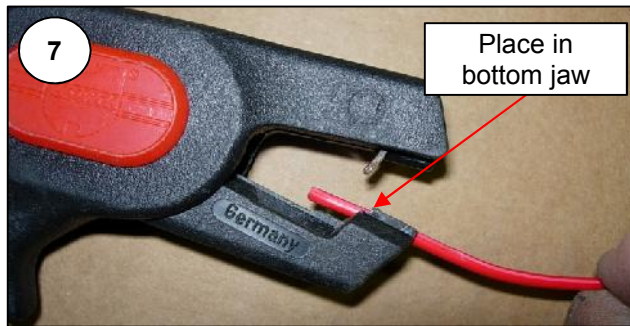
- 1 Squeeze handles sufficiently to bring the lever jaws together. Lay cable between stripping jaws as shown in **ILL 4**.

Note:

There should be no necessity to strip more than 10mm of sheathing from the cable end for any of the connectors used by Flexiglass. If for any reason a longer stripped end is required, do it in repeated 10mm bites, the pieces can then be slid off the end using the fingers.

- 2 Continue squeezing the handles together to engage the gripping and stripping jaws.
- 3 Increase the pressure slightly as you continue to squeeze. The stripping jaws will then move independently of the pliers cutting and stripping the end of the wire until with a sharp click both sets of jaws will automatically disengage.





- 4 The Wurth pliers are simpler in operation. After placing the cable in the "V" of the bottom jaw, **ILL 7**, squeeze the handles together. The squeezing action brings the jaws together and forces the bottom jaw forward both cutting and pulling the sheath from the cable. See **ILL 8 & 9**.



PREPARATION

- 1 Prep the light holes in the deflector for the brake light assembly.
 - 2 x 3.9 mm or 5/32" holes at each end on the dimpled marks.
 - 1 x 5/16" hole in the middle.
 See **Photo 1 & 2**.
- 2 Prep a hole in the canopy shell, centred at the rear with a 12 mm drill bit about 50 mm back from the front of the dust deflector recess on the canopy shell for a rubber grommet to feed in the brake light wires. See **Photo 3**.



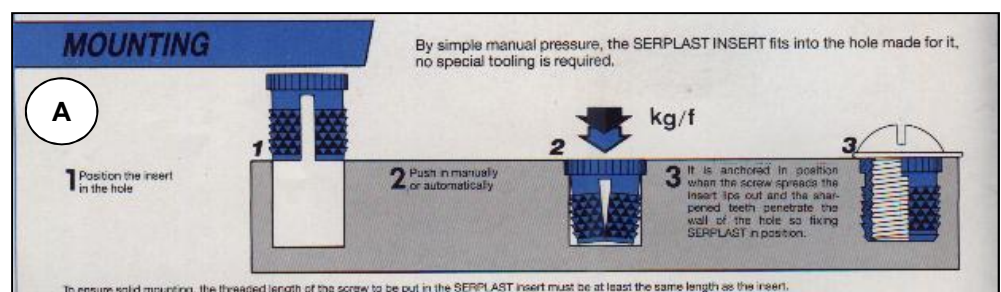
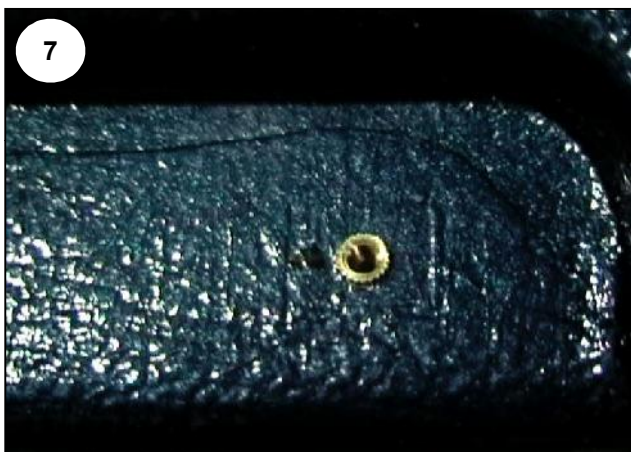
- 3 To make positioning of the dust deflector as easy as possible, the canopy can be resting on the ground. This allows the canopy assembler to work over the top and use your finger tips holding the ends of the deflector as a guide to ensure accurate fitting. The tape is quite adhesive so don't apply any pressure until the fit is seen to be good.

- 4 Cut the canopy and paint if required, masking the areas on the canopy and dust deflector where adhesive (including tape) will be applied. See **Photo 4, 5 & 6**.



USING THE NUT INSERT TOOL

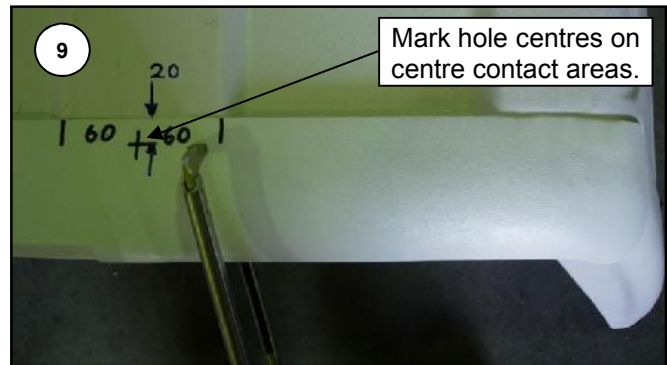
- 5 Use inset on tool to place brass nut inserts into position on anvil supplied as shown below in photo 7 & 8 and tap lightly with a small hammer. **Illustration A & B Photo 7 and 8**



6 Place the dust deflector over the canopy recess.

7 Mark and drill both deflector and canopy.
Photo 9 & 10

8 Attach the brake light to the dust deflector using the supplied screws and tightening into the brass inserts. Install rubber grommet into hole in the canopy and feed the brake light wires through.
See **Photo 11 & 12**



9 Sand adhesion areas of canopy and deflector with 60 - 80 grit sandpaper to roughen the surfaces.

10 Blow off dust and grit, then wipe with IPA wipes or a clean rag and IPA. Rotate rag or change wipes frequently to avoid transferring grease and dirt from one place to another. See **Photo 13**.



- 11 Apply two strips of black double-sided adhesive tape **TAPE260** to each adhesion area running across the canopy. The maximum distance from the front edge of the recess is 60 mm. See **Photo 14**.
 - 12 Remove plastic protector strip from the top of the adhesive tape.
Photo 15, 16, 17
 - 13 Apply a 3 - 4 mm bead of Sikaflex 221 **SEAL430** between the tapes as shown in photo 14.
Photo 14
 - 14 Use the **BLTCHSS620** bolts to locate the dust deflector, then push down firmly onto the tape.
 - 15 Check for any excess glue visible and wipe off with a rag moistened with IPA or an IPA wipe. Tape ends of deflector with masking tape.
- Allow 4 - 5 hours for the glue to set.
- 16 Build the remainder of the canopy as per the Adhesive base rail instructions.

